

JFD WEALTH'S TOP SPIN

JFD Wealth's Top Spin Quant's performance has resulted in no major changes with almost 0.38% profit during June 2015. June was the first month, during which the new policies for the external flows came as improvement going hand in hand with a new allocation method. Both elements led to the fact, that Top Spin stabilized its performance, despite the fact that the volumes went down. As we see signals, indicating that the system is changing its performance direction, we are focusing on increasing again the volumes gradually during next few months. Top Spin will remain focused on trading CFDs on indices on first place and various FX pairs on second one, seeking for momentum opportunities coming from the market.

Top Spin is designed for trading FX market and CFDs for indices in order to diversify the risk between different asset classes. Top Spin utilizes short-term strategies to achieve high volumes, always with the goal of providing superior risk-adjusted results. Top Spin is a fully automated quantitative trading system which effectively eliminates human emotion. The overall risk is permanently screened and each trading position is continuously adjusted according to the market volatility. Due to its low correlation to other asset classes and or trading strategies, Top Spin can complement any portfolio.

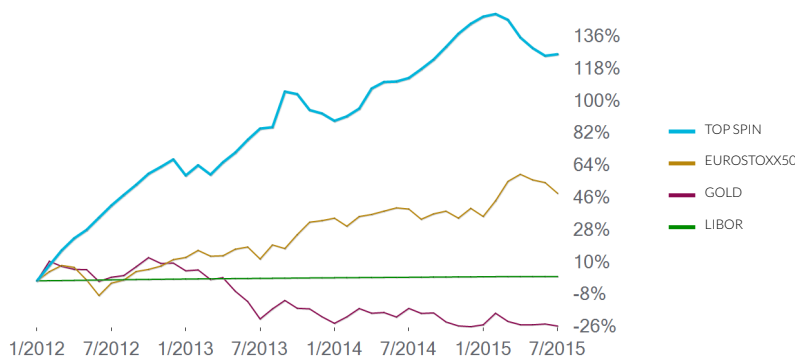


Lars Gottwik
MD / Partner / Advisor Top Spin



Sacha Keller
Head of Quants

TOP SPIN PERFORMANCE CHART



TOP SPIN STRATEGY FACTS

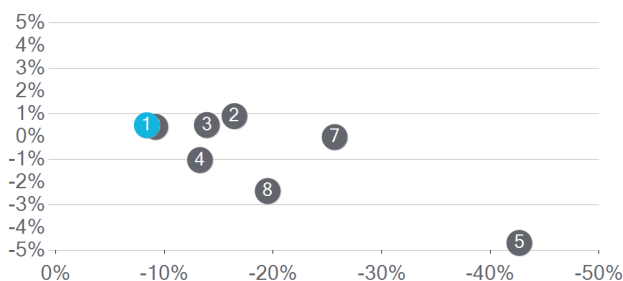
Inception:	01/01/2012
Since Strategy inception:	126.41%
Annualized performance:	26.30%
Average monthly:	1.96%
Highest monthly:	10.71%
Lowest monthly:	-5.35%
Margin to equity:	7.27%
Maximum drawdown:	9.36%
Maximum time off peak:	7 mth
% of positive months:	76.19%
MAR ratio:	2.81
Correlation to S&P500:	0.16
Sharpe ratio:	2.19
12 month Libor :	0.16929%

PERFORMANCE

	JAN	FEB	MAR	APR	MAY	JUN	JUL	AUG	SEPT	OCT	NOV	DEC	
2012	8.61%	7.74%	5.72%	3.80%	5.32%	5.00%	4.15%	3.84%	4.01%	2.41%	2.54%	-5.35%	58.77%
2013	3.58%	-3.18%	4.30%	3.28%	4.14%	3.51%	0.42%	10.71%	-0.71%	-4.34%	-0.99%	-2.12%	19.19%
2014	1.33%	2.27%	5.70%	1.75%	0.14%	0.92%	2.33%	2.46%	3.13%	3.20%	2.35%	1.63%	30.72%
2015	0.60%	-1.32%	-4.00%	-2.52%	-1.85%	0.38%	---	---	---	---	---	---	-8.48%

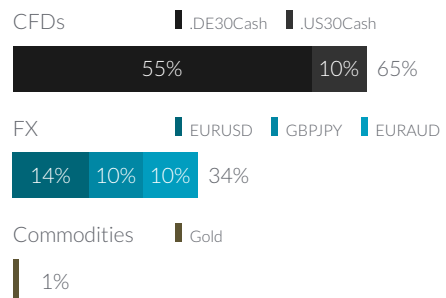
Performance results are net of fees excluding taxes, management and performance fees. Past performance is not a reliable indicator of future results.

RETURN RISK MATRIX



1) TOP SPIN, 2) Dax, 3) Eurostoxx50, 4) Gold, 5) Brent Crude Oil, 6) S&P 500, 7) Bovespa, 8) Silver

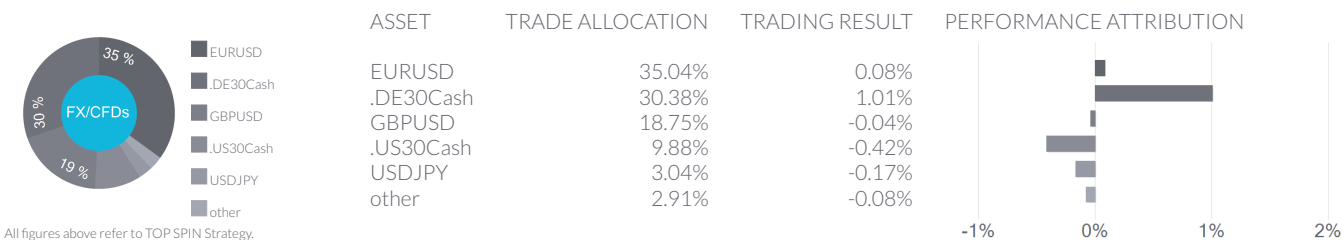
ASSET ALLOCATION



Schematic representation only. Allocations are continuously adjusted based on changing market conditions.

JFD WEALTH'S TOP SPIN

TOP SPIN PAIR RESULTS JUNE 2015



All figures above refer to TOP SPIN Strategy. The TOP SPIN PAIR RESULTS JUNE 2015 chart represents the percentage wise trade allocation during the last month as of the date reported. It is to be used as an indication only. Trade allocations may change rapidly due to market conditions.

TRADE ANALYSIS

STRONGEST PERFORMERS

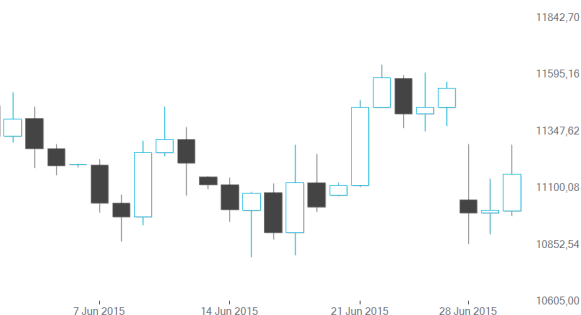
.DE30Cash	Long Trade	0.52%
.DE30Cash	Long Trade	0.48%
EURUSD	Short Trade	0.16%

WEAKEST PERFORMERS

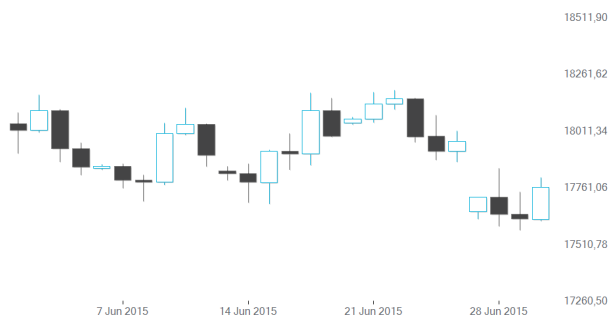
.DE30Cash	Long Trade	-0.36%
.DE30Cash	Long Trade	-0.16%
.DE30Cash	Long Trade	-0.16%

MARKET OVERVIEW

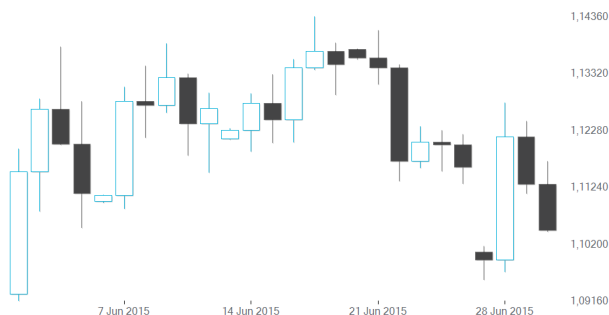
.DE30Cash JUNE 2015



.US30Cash JUNE 2015



EURUSD JUNE 2015



XAUUSD JUNE 2015

