



**ProFx V.2.0**

## **USER MANUAL**

<http://www.forexeasystems.com>  
[office@forexeasystems.com](mailto:office@forexeasystems.com)

### Table of contents:

Page 2	01 Introducing
Page 2	02 How to download and install ProFx
Page 5	03 Setup and first steps
Page 7	04 Customize the used Indicators
Page 12	05 General Trading Rules
Page 14	06 ProFx Trading Rules
Page 18	07 Advanced Trading Rules
Page 20	08 Terms and Conditions
Page 21	09 License Agreement
Page 23	10 Contact Information

## 1.1

### INTRODUCING

THE MANUAL TRADING STRATEGY PROFX IS THE RESULT FROM SCIENTIFIC STUDIES OF THE FOREIGN EXCHANGE MARKET (FOREX) AND AVAILABLE RESOURCES.

THE STRATEGY CONTINUES TO BE IMPROVED FOR THE PURPOSE OF REACHING MAXIMUM POSITIVE RESULTS AS A POWERFULL TOOL IN THE FOREX MARKET.

PROFX IS DEVELOPED FOR THE COMMERCIAL PLATFORM META TRADER 4. BEFORE USING THIS APPLICATION, AS WITH ANY SYSTEM, BECOME ACQUAINTED WITH THE MANAGEMENT OF TOOLS AND THE USER INTERFACE.

## 2.1

### HOW TO DOWNLOAD AND INSTALL PROFX

FOLLOW THE PROVIDED DOWNLOAD LINK AND DOWNLOAD THE INSTALLATION FILE AND THE USER MANUAL TO YOUR DESKTOP.



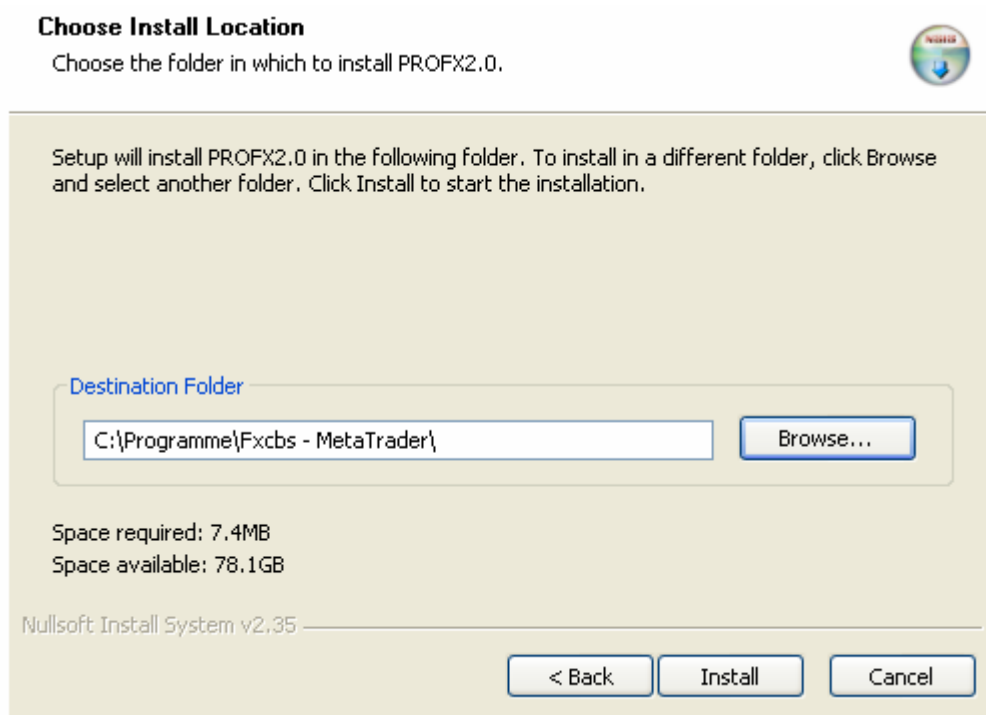
## 2.2

CLOSE ALL OTHER APPLICATIONS BEFORE STARTING WITH THE SETUP. THIS WILL MAKE IT POSSIBLE TO UPDATE RELEVANT SYSTEM FILES WITHOUT REBOOTING THE COMPUTER.

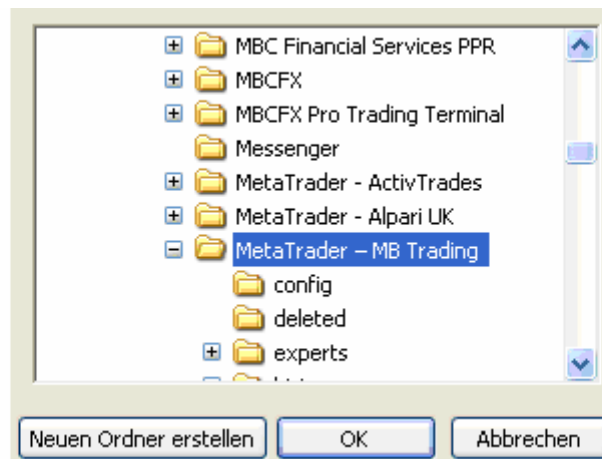


## 2.3

NEXT STEP: CHOOSE THE FOLDER WHERE THE META TRADER 4 PLATFORM IS INSTALLED.



TO SELECT THE DESTINATION FOLDER YOU CAN USE THE "BROWSE..." FUNCTION.



MARK THE FOLDER AND CLICK "OK". (WINDOW WILL BE CLOSED AUTOMATICALLY)

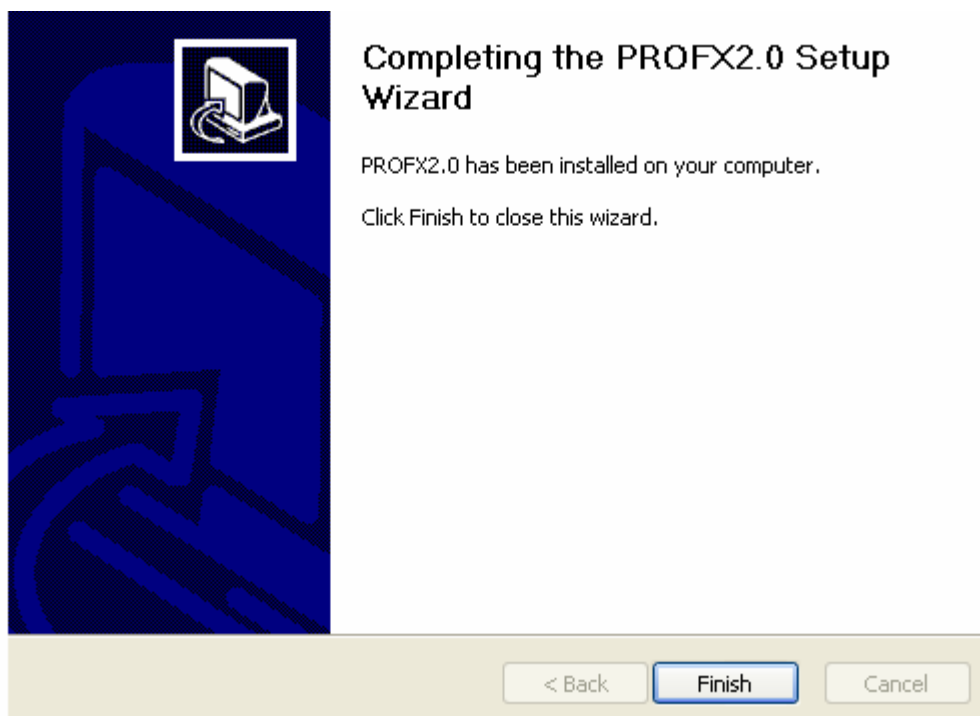
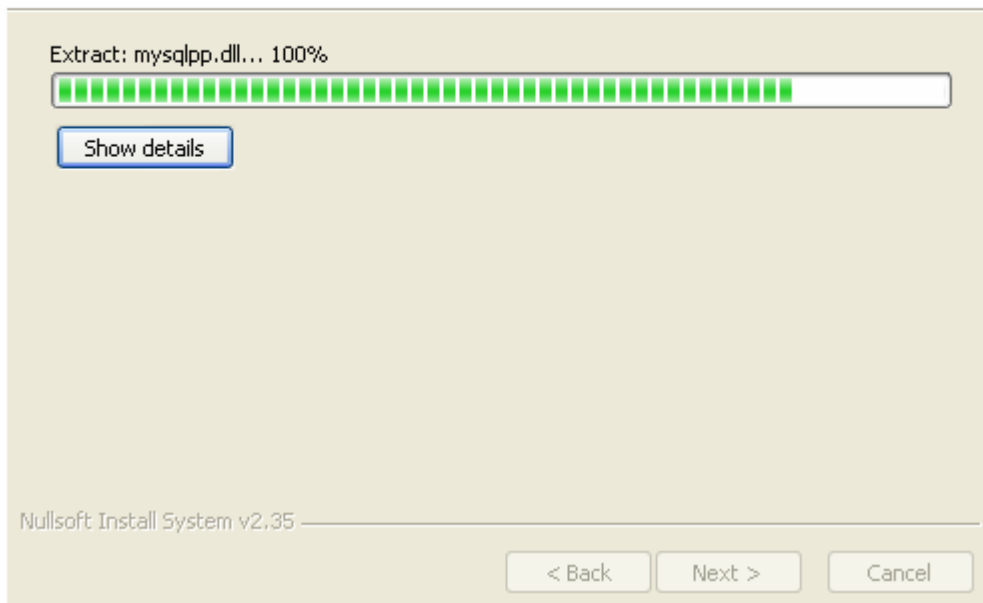
## 2.4

WHEN READY CLICK: "INSTALL"



## Installing

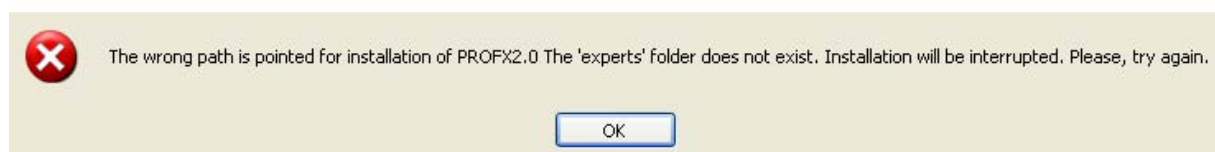
Please wait while PROFX2.0 is being installed.



AFTER THE INSTALLATION IS COMPLETED CLICK "FINISH".

## 2.5

WHEN YOU HAVE BEEN CHOSEN A NON EXISTING DESTINATION FOLDER THE FOLLOWING WINDOW WILL APPEAR.



IF YOU SEE THIS WINDOW CLOSE THE INSTALLATION PROGRAM AND START AGAIN.

### 3.1

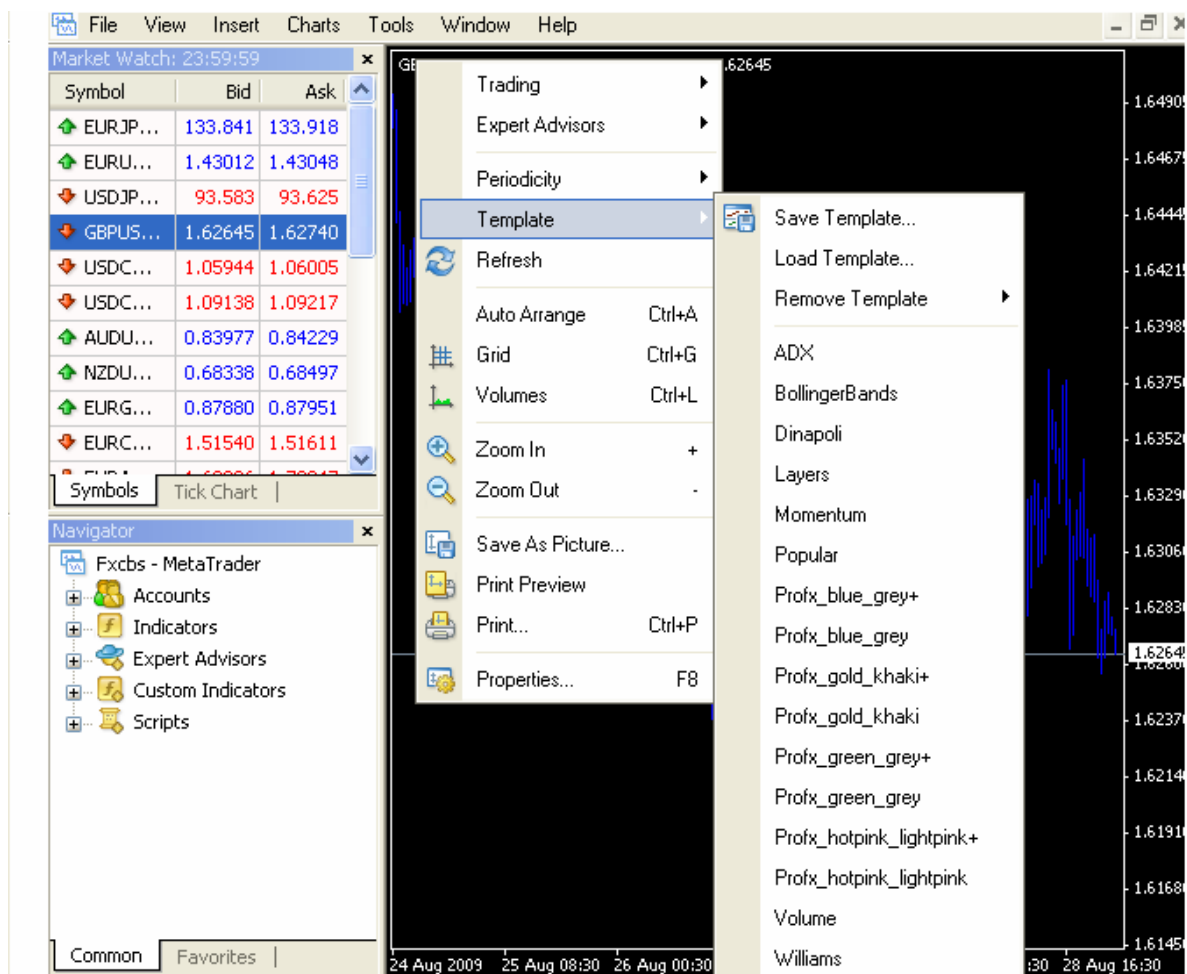
## SETUP AND FIRST STEPS

START THE META TRADER 4 PLATFORM.



### 3.2

OPEN A NEW CHART WINDOW (EXAMPLE: GBPUSD, PERIOD 30 MINUTES) AND MOVE THE MOUSE CURSOR TO THE CHART WINDOW. CLICK ON TIME THE LEFT MOUSE BUTTON. GO TO "TEMPLATE" AND CHOSE ONE THE ProFX TEMPLATES.

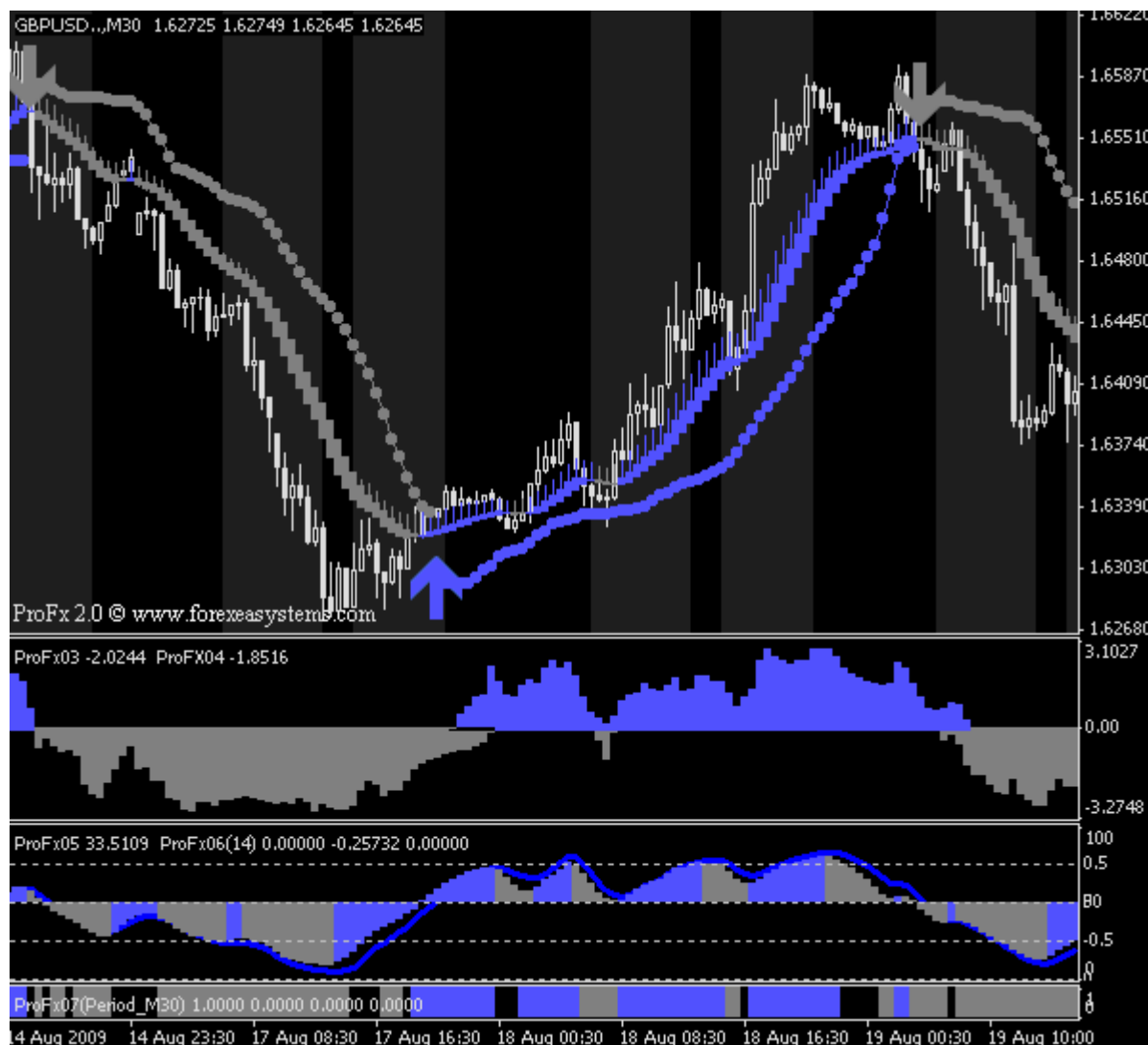


(+) TEMPLATES INCLUDE S & R LEVELS.

TEMPLATE STYLE AND COLOURS ARE OF COURSE FULLY ADJUSTABLE.

### 3.3

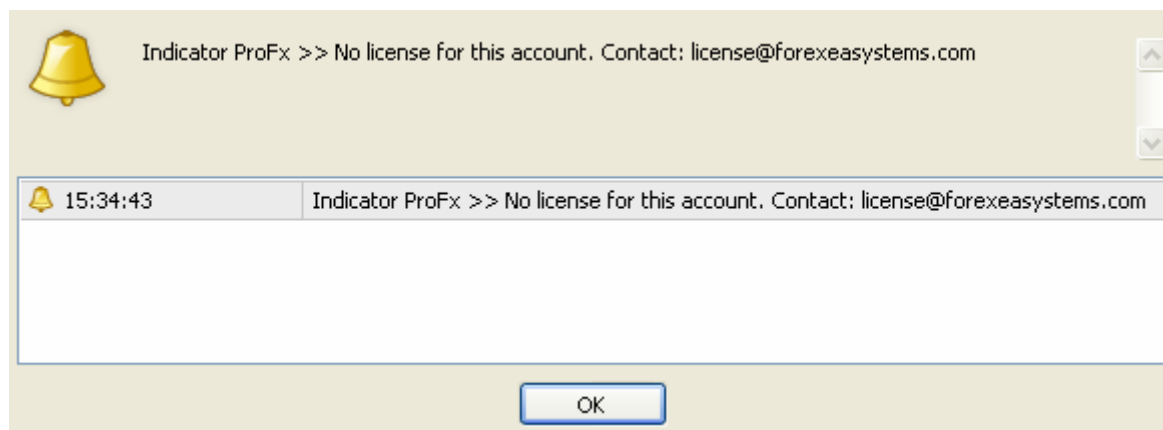
AFTER LOADING THE TEMPLATE YOUR CHART WILL LOOK LIKE BELOW:



### 3.4

TO USE ProFx IT IS REQUIRED THAT YOUR META TRADER PLATFORM IS CONNECTED WITH THE BROKER SERVER.

WHEN YOUR PLATFORM IS DISCONNECTED OR THE ACCOUNT NAME DO NOT MATCH WITH THE REGISTERED ACCOUNT NAME YOU WILL RECEIVE THE FOLLOWING ERROR MESSAGE.



## CONNECTION PROBLEMS:

MAKE SURE THAT THE PLATFORM IS CONNECTED WITH THE BROKER SERVER. WHEN YOU USE A FIREWALL OR A VPS SERVER FOR TRADING MAKE SURE THAT THE PORT 3306 CAN BE USED FOR OUTGOING/INCOMING CONNECTIONS.

DISPLAYED ACCOUNT HOLDER AND REGISTERD ACCOUNT HOLDER MISSMATCHING:

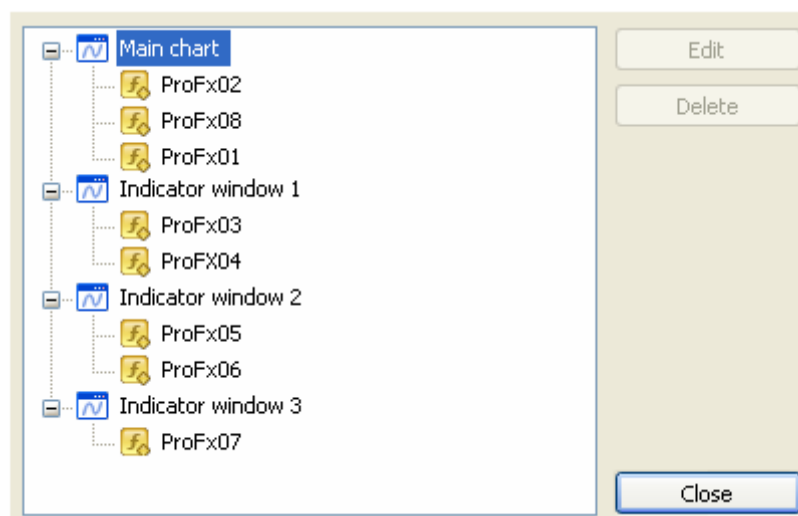
PLEASE CONTACT US AT: [license@forexeasystems.com](mailto:license@forexeasystems.com)

WE WILL THEN UPDATE THE LICENSE INFORMATION FOR YOU. NOTE: THE ACCOUNT HOLDER NAME NEED TO BE RELATED WITH THE LICENSE HOLDER.

## 4.1

### CUSTOMIZE THE USED INDICATORS

ALL INDICATORS CAN BE FULLY ADJUSTED AND CUSTOMIZED BY THE USER. FOR CHANGES OPEN THE WINDOW "INDICATORS" (CTRL+I).

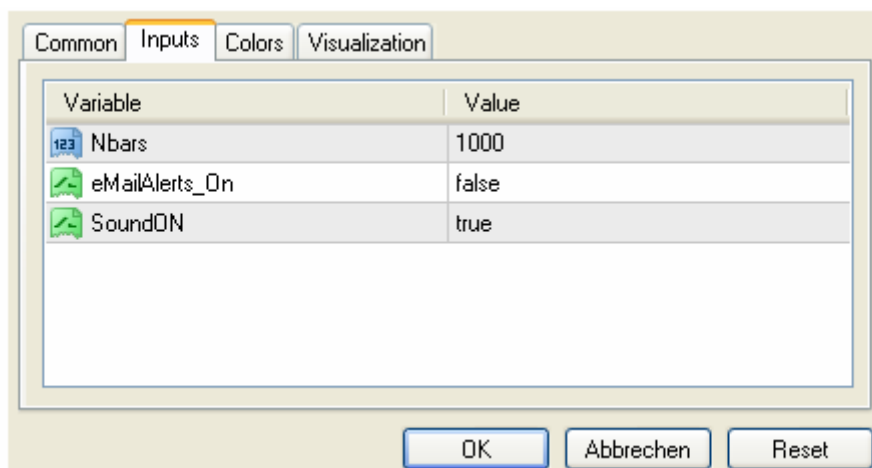


FOR CHANGES MARK THE INDICATOR AND CLICK "EDIT". THE RELATED INDICATOR WINDOW WILL BE OPENED AUTOMATICALLY.

## 4.2

### PROFX01 – TREND BASED INDICATOR. (MAINCHART)

THE FOLLOWING VALUES CAN BE ADJUSTED:

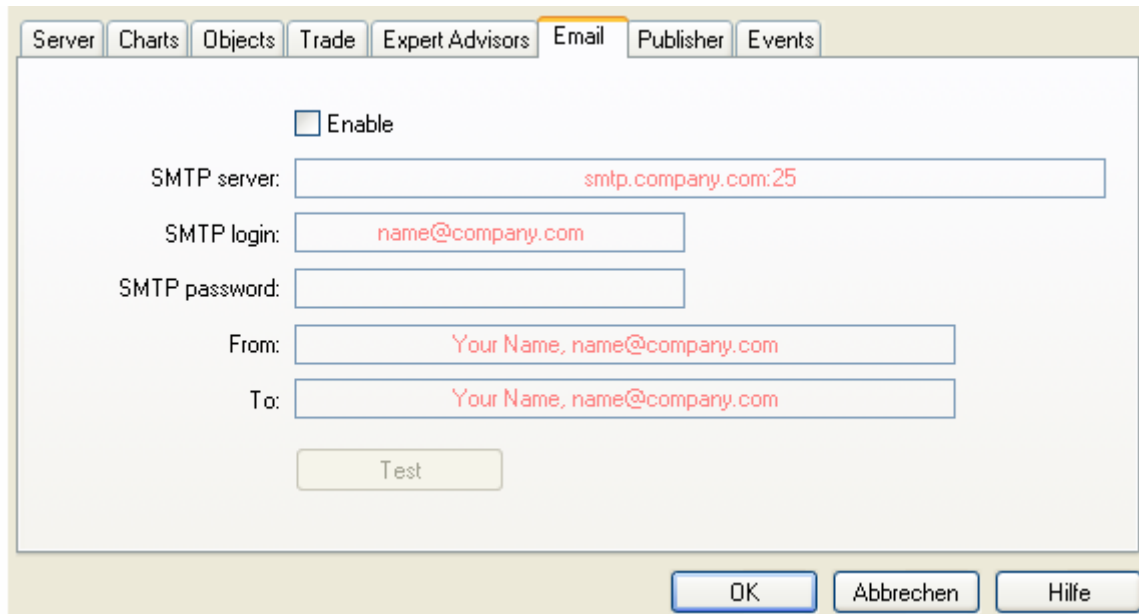


**NBARS:** THE NUMBER BARS (SHOULD BE NOT HIGHER THEN 2000). OTHERWISE IT CAN SLOW DOWN YOUR SYSTEM. DEFAULT VALUE IS 1000.

**EMailAlerts\_On:** FALSE/TRUE

PROFX SUPPORTS EMAIL/SMS ALERTS. WHEN YOU WISH TO RECEIVE ALERTS VIA EMAIL YOU NEED TO CHANGE THE VALUE TO TRUE AND SETUP THE EMAIL SETTINGS.

(CTRL+O) > EMAIL



The screenshot shows a software window with several tabs: Server, Charts, Objects, Trade, Expert Advisors, Email (selected), Publisher, and Events. The 'Email' tab is active, displaying a configuration form. At the top of the form is an 'Enable' checkbox, which is currently unchecked. Below it are five text input fields: 'SMTP server' (containing 'smtp.company.com:25'), 'SMTP login' (containing 'name@company.com'), 'SMTP password' (empty), 'From' (containing 'Your Name, name@company.com'), and 'To' (containing 'Your Name, name@company.com'). A 'Test' button is positioned below the 'To' field. At the bottom of the window are three buttons: 'OK', 'Abbrechen', and 'Hilfe'.

**IMPORTANT:** BEFORE YOU ENABLE EMAIL ALERTS TEST THE EMAIL SETTINGS. ProFx CAN ONLY SEND EMAILS WHEN THESE SETTINGS ARE CORRECT.

DEFAULT VALUE IS FALSE.

**SOUNDON:** FALSE/TRUE

EVERY TIME WHEN A NEW POSSIBLE ENTRY COMES UP ProFx WILL ALERT YOU. (SOUND + VISUAL ALERT)

SOUNDON: FALSE – VISUAL ALERT BUT NO SOUND

SOUNDON: TRUE – VISUAL ALERT AND SOUND ALERT

DEFAULT SETUP: TRUE

#### 4.3

##### PROFX02 – TREND BASED INDICATOR. (MAINCHART)

THE FOLLOWING VALUES CAN BE ADJUSTED:

COLOR

WIDTH

STYLE



#	Color	Width	Style
0	Gray	1. _____	0. _____
1	81,81,255	1. _____	0. _____
2	Gray	3. _____	0. _____
3	81,81,255	3. _____	0. _____

Buttons: OK, Abbrechen, Reset

#### 4.4

#### PROFX03 – MESSURES TREND AND STRENGH (INDICATOR WINDOW 1)

THE FOLLOWING VALUES CAN BE ADJUSTED:

COLOR

WIDTH

STYLE

#	Color	Width	Style
0	Black	0. _____	0. _____
1	81,81,255	4. _____	0. _____
2	Gray	4. _____	0. _____

Buttons: OK, Abbrechen, Reset

#### 4.5

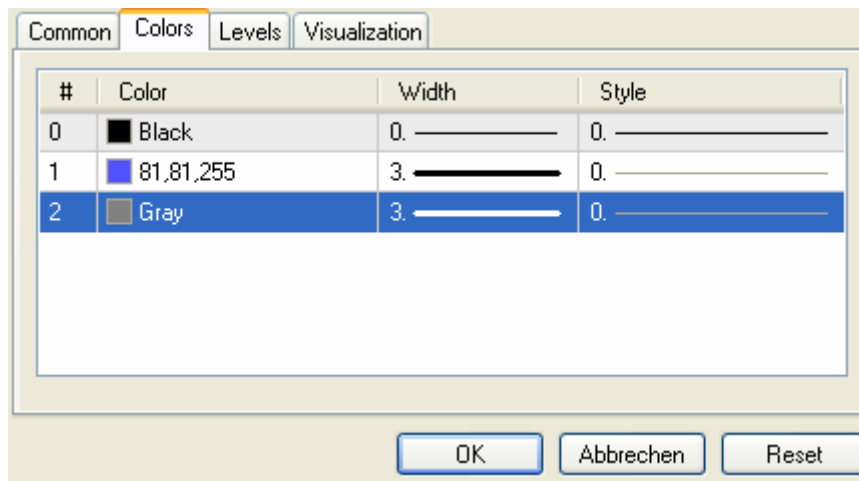
#### PROFX04 – MESSURES TREND AND STRENGH (INDICATOR WINDOW 1)

THE FOLLOWING VALUES CAN BE ADJUSTED:

COLOR

WIDTH

STYLE

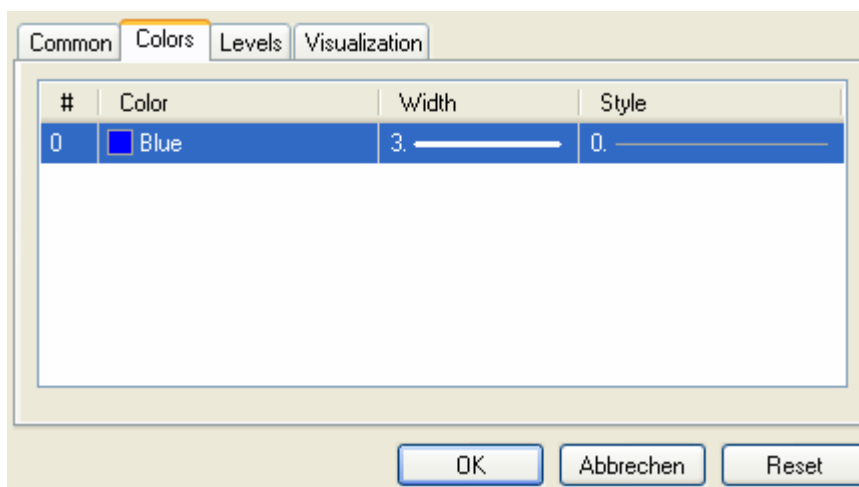


#### 4.6

#### PROFX05 – MEASURES STRENGTH AND OVERBOUGHT/OVERSOLD LEVELS (INDICATOR WINDOW 2)

THE FOLLOWING VALUES CAN BE ADJUSTED:

COLOR

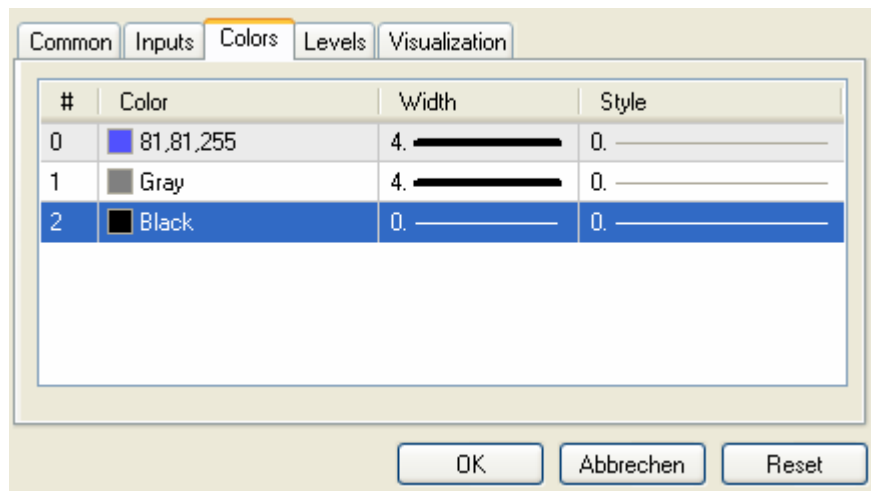


#### 4.7

#### PROFX06 – MEASURES STRENGTH AND OVERBOUGHT/OVERSOLD LEVELS (INDICATOR WINDOW 2)

THE FOLLOWING VALUES CAN BE ADJUSTED:

COLOR



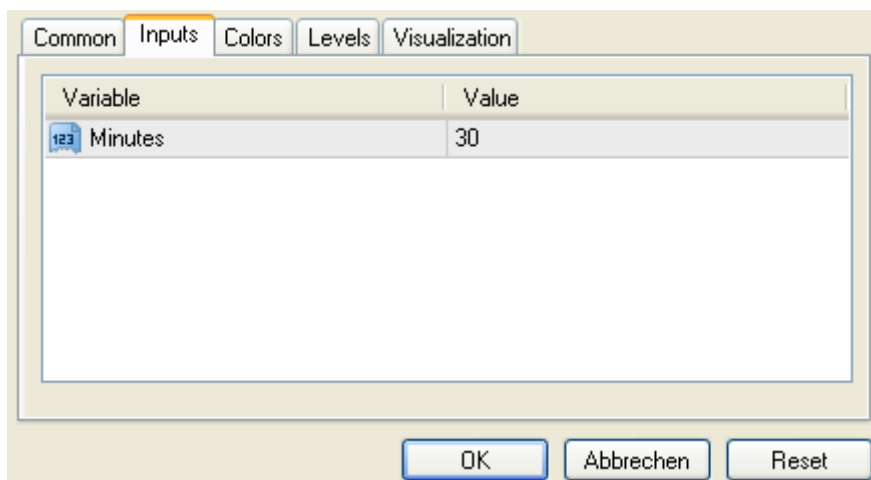
#### 4.8

##### PROFX07 – MEASURES MARKET PRESSURE; STRONG UP/DOWN (INDICATOR WINDOW 3)

THE FOLLOWING VALUES CAN BE ADJUSTED:

TIMEFRAME

15 – FOR THE 15 MINUTE CHART; 30 – FOR THE 30 MINUTE CHART; 60 – FOR THE 60 MINUTE CHART; 240 – FOR THE 240 MINUTE CHART...



#### 4.9

##### PROFX08 – TRADING (MAINCHART)

WE RECOMMEND TO USE ProFx DURING THE EU AND/OR THE US SESSION. AS THE TRADING TIME (PROFX08) IS DISPLAYED ACCORDING TO THE BROKER SERVER TIME YOU NEED TO ADAPT THE SETTINGS.

Variable	Value
NumberOfDays	50
Begin_1	06:30
End_1	15:00
Color_1	30,30,30
Begin_2	13:00
End_2	21:00
Color_2	30,30,30

OK Abbrechen Reset

START FROM THE EU SESSION IS: 07:00 GMT  
CLOSE FROM THE EU SESSION IS: 17:00 GMT

START FROM THE US SESSION (NY OPEN) IS: 13:00 GMT  
CLOSE FROM THE US SESSION (NY CLOSE) IS: 21:00 GMT

ALL MARKET OPEN/CLOSE TIMES CAN BE DOWNLOADED ON OUR HOMEPAGE:

[http://www.forexeasystems.com/download\\_files/market\\_times.pdf](http://www.forexeasystems.com/download_files/market_times.pdf)

## 5.1

### GENERAL TRADING RULES

WHEN YOU FOLLOW THE "GENERAL BASIC RULES" AND THE PROFX TRADING RULES YOU WILL HAVE SUCCESS.

## 5.2

### TRADING PLAN

MANY TRADERS STARTS TRADING WITHOUT ANY PLAN. SOUNDS UNBELIEVABLE BUT IS UNFORTANLY THE TRUTH.

PLAN:

WHERE YOU WANT TO ENTER A TRADE ?

HOW MUCH MONEY YOU ARE GOING TO RISK ?

WHERE YOU ARE GOIUNG TO GET OUT IF YOU ARE WRONG ?

WHERE YOU ARE GOING TO TAKE PROFITS IF YOU ARE RIGHT ?

KNOW HOW MUCH MONEY YOU ARE GOING TO MAKE IF YOU ARE RIGHT ?

NEVER TRADE WITHOUT A PROTECTIVE STOPLOSS !

**RULE: DONT TRADE WITHOUT A TRADE PLAN !**

## 5.3

### MONEYMANAGEMENT

CREATE FIXED RULES HOW MUCH MONEY YOU WANT TO RISK PER TRADE AND STICK TO YOUR RULES. DONT USE A RISK FROM MORE THEN 5% PER TRADE !

**RULE: USE MONEYMANAGEMENT !**

## 5.4

### PROTECTIVE STOP LOSS

ALWAYS PLACE A STOPLOSS WITH THE INITIAL ORDER. NO MENTAL STOPS! MANY TRADERS SAY: „I USE MENTAL STOPS“ AND CHANGE THEM MENTAL WHEN THE MARKET GOES AGAINST THEM. WITH A MENTAL STOP, AS SOON AS THE MARKET HAS GONE THROUGH YOUR STOP LOSS PRICE, YOU WILL NO LONGER ACT ABSOLUTELY RATIONAL. NOW, YOU ARE MOST LIKELY TO MAKE A DECISION BASED ON FEAR, GREED AND HOPE.

**RULE: NEVER TRADE WITHOUT A FIXED PROTECTIVE STOP !**

## 5.5

### TAKING LITTLE PROFITS AND LETTING YOUR LOSSES RUN

A MAJOR MISTAKE FROM TRADERS IS TAKING SMALL PROFITS AND LETTING LOSSES RUN. RESULT FROM HAVING NO TRADE PLAN.

AFTER ONE OR TWO LOSING TRADES, YOU ARE LIKELY TO TAKE SMALL PROFITS ON THE NEXT TRADE EVEN THOUGH THAT TRADE COULD TURNED INTO A LARGE WINNER.

**RULE: CUT LOSSES AND LET WINNER RUN !**

## 5.6

### AVERAGING UP/DOWN

IN FOREX WITH A LEVERAGE FROM 100:1 OR GREATER, AVERAGING A LOSS CAN BE DISASTROUS FOR YOUR ACCOUNT.

A TYPICAL APPROACH IS THAT AFTER YOU WENT LONG AND THE PRICE DROPS DOWN; YOU MIGHT FIGURE THAT IT WAS A GOOD BUY THEN, IT IS A BETTER NOW.

YOU MAY JUSTIFY AVERAGING DOWN BY FIGURING YOU WILL HAVE A LOWER AVERAGE PRICE AND REQUIRE A SMALLER MOVE TO BREAK EVEN. UNFORTANLY, YOU WILL LOSE TWICE AS MUCH IF THE MARKET CONTINUES AGAINST YOU.

**RULE: NO AVERAGING UP AND DOWN !**

## 5.7

### OVERTRADING

TO MUCH OPEN TRADES WITH TO MUCH RISK IS A CLASSICAL EXAMPLE FROM OVERTRADING. OUR RULE IS TO HAVE ONLY 3 POSITIONS (MAX) OPEN AT ONE TIME. THIS GREATLY LIMITS ANY POSSIBLE OVER TRADING.

NOTE: OVERTRADING IS THE QUICKEST WAY TO BLOW UP YOUR ACCOUNT.

**RULE: NO OVERTRADING !**

## 5.8

### NOT HAVING PATIENT

YOU TRADE TO MAKE MONEY, RIGHT ? YOU DONT GET MONEY TO ENTER AS MUCH TRADES AS POSSIBLE. CHOOSE THE BEST TRADING SETUPS AND WAIT PATIENT WHILE THEY COME UP.

IST SOMETIMES BETTER NOT TO TRADE THEN TO TRADE AND LOSING MONEY.

**RULE: BE PATIENT !**

**5.9**

## **DISCIPLINE**

IT HAS BEEN OUR EXPERIENCE IN TRADING FOREX AND HELPING NEW AND SEASONED TRADERS, THAT THE GREATEST CAUSE OF LOSSES IS THE ABSENCE OF SELF DISCIPLINE.

TRADER NEED A LOT OF SELF DISCIPLINE !

THE BEST WAY TO TRAIN YOUR DISCIPLINE IS MAKE YOURSELF WATCH THE MARKET FOR A WHOLE WEEK WITHOUT DOING ONE TRADE. EVEN IF THE PERFECT TRADE COMES UP DONT DO ANYTHING. THIS WILL PROVE YOURSELF THAT YOU HAVE DISCIPLINE TO BE PATIENT AND NOT TO TRADE.

**RULE: BE DISCIPLINED!**

**6.1**

## **ProFx TRADING RULES (BASIC)**

**6.2**

### **ENTRY**

ALL INDICATORS NEED TO POINT IN THE SAME DIRECTION.

**6.3**

### **TREND**

TRADE ONLY WITH THE MAIN TREND (4 HOUR TREND).

**6.4**

### **NEWS**

DO NOT ENTER A TRADE SHORTLY BEFORE MAJOR NEWS.

**6.5**

### **HOLIDAY SESSIONS**

DO NOT TRADE DURING HOLIDAY SESSIONS.

**6.6**

### **STOPLOSS**

NEVER TRADE WITHOUT PLACING SL ORDER FOR YOUR TRADE.

SL SHOULD BE PLACED NEAR THE NEXT IMPORTANT SUPPORT AND RESISTANCE LEVEL. WHEN YOU FIND IT DIFFICULT TO DETERMINE THE SUPPORT AND RESISTANCE LEVELS USE THE + TEMPLATES.

RECOMMEND SL IN PIPS: 50-75 PIPS.

DO NOT WORK WITH MENTAL STOPS.

IF YOU FEEL NOT COMFORTABLE WITH SUPPORT AND RESISTANCE LEVELS, YOU CAN USE ALTERNATIVE FIBS OR PIVOTS.

## 6.7

### EXIT

EXIT @ TAKE PROFIT 100 PIPS

EXIT WHEN THE MARKET DIRECTION CHANGES.

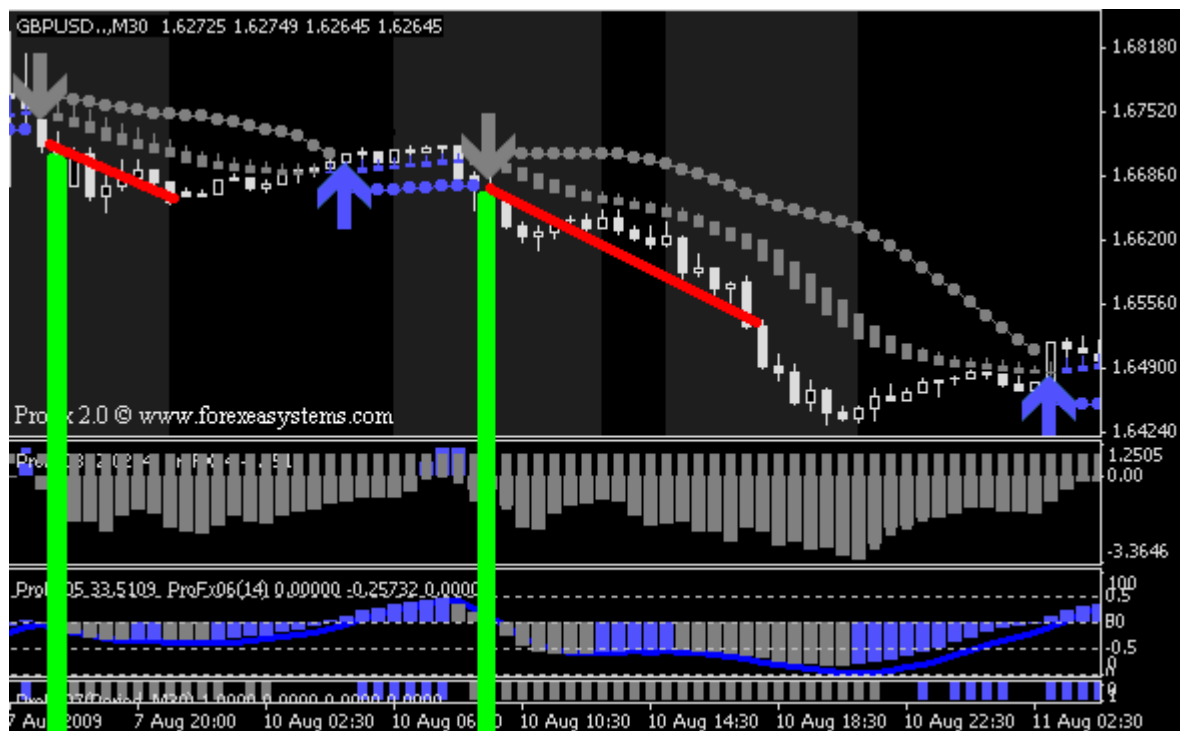
EXIT THE TRADE WHEN STRONG NEWS (EXAMPLE: NFP) AND YOU HAVE NOT ONE IDEA WHAT WILL BE THE DIRECTION AFTER THE RELEASE.

EXIT THE TRADE AT THE END OF THE US SESSION.

NOTE: WE HIGHLY RECOMMEND THAT YOU PAPER TRADE FOR 1-2 WEEKS ON A DEMO ACCOUNT BEFORE YOU START TO TRADE LIVE WITH ProFx.

## 6.8

### TRADE EXAMPLES 1



### SIGNAL 1.1

#### ENTRY

ALL INDICATORS POINT IN THE SAME DIRECTION ?	YES	OK
MAINTREND ?	DOWN	OK
NEWS AHEAD ?	NO	OK
HOLIDAY SESSION ?	NO	OK
TRADING TIME ?	US SESSION	OK
STOPLOSS ?	LAST R LEVEL	OK

EXIT

US SESSION ENDS – EXIT

RESULT: 40-50 PIPS

**SIGNAL 1.2**

ALL INDICATORS POINT IN THE SAME DIRECTION ?	NO	-
MAINTREND ?	DOWN	-
NEWS AHEAD ?	NO	OK
HOLIDAY SESSION ?	NO	OK
TRADING TIME ?	ASIA SESSION	-
STOPLOSS ?	LAST S LEVEL	OK

NO TRADE

**SIGNAL 1.3**

ALL INDICATORS POINT IN THE SAME DIRECTION ?	YES	OK
MAINTREND ?	DOWN	OK
NEWS AHEAD ?	NO	OK
HOLIDAY SESSION ?	NO	OK
TRADING TIME ?	EU SESSION	OK
STOPLOSS ?	LAST R LEVEL	OK

EXIT VIA TAKE PROFIT

RESULT: 100 PIPS

**SIGNAL 1.4**

ALL INDICATORS POINT IN THE SAME DIRECTION ?	NO	-
MAINTREND ?	DOWN	-
NEWS AHEAD ?	NO	OK
HOLIDAY SESSION ?	NO	OK
TRADING TIME ?	ASIA SESSION	-
STOPLOSS ?	LAST R LEVEL	OK

NO TRADE



## TRADE EXAMPLES 2



## SIGNAL 2.1

## ENTRY

ALL INDICATORS POINT IN THE SAME DIRECTION ?	NO	-
MAINTREND ?	DOWN	OK
NEWS AHEAD ?	NO	OK
HOLIDAY SESSION ?	NO	OK
TRADING TIME ?	ASIA SESSION	-
STOPLOSS ?	LAST R LEVEL	OK

NO TRADE

## SIGNAL 2.2

## ENTRY

ALL INDICATORS POINT IN THE SAME DIRECTION ?	NO	-
MAINTREND ?	DOWN	-
NEWS AHEAD ?	NO	OK
HOLIDAY SESSION ?	NO	OK
TRADING TIME ?	EU SESSION	OK
STOPLOSS ?	LAST S LEVEL	OK

NO TRADE

## SIGNAL 2.3

## ENTRY

ALL INDICATORS POINT IN THE SAME DIRECTION ?	NO	-
MAINTREND ?	DOWN	OK

NEWS AHEAD ?	NO	OK
HOLIDAY SESSION ?	NO	OK
TRADING TIME ?	EU SESSION	OK
STOPLOSS ?	LAST R LEVEL	OK

NO TRADE

#### **SIGNAL 2.4**

ENTRY

ALL INDICATORS POINT IN THE SAME DIRECTION ?	NO	-
MAINTREND ?	DOWN	-
NEWS AHEAD ?	NO	OK
HOLIDAY SESSION ?	NO	OK
TRADING TIME ?	EU SESSION	OK
STOPLOSS ?	LAST S LEVEL	OK

NO TRADE

#### **SIGNAL 2.5**

ENTRY

ALL INDICATORS POINT IN THE SAME DIRECTION ?	NO	-
MAINTREND ?	DOWN	OK
NEWS AHEAD ?	NO	OK
HOLIDAY SESSION ?	NO	OK
TRADING TIME ?	EU SESSION	OK
STOPLOSS ?	LAST S LEVEL	OK

ENTER AFTER PROFX 07 CONFIRMS THE TRADE.

EXIT VIA TP: 100 PIPS

AS YOU CAN SEE TRADING WITH PROFX IS PRETTY EASY AND YOU CAN ALSO SEE IT IS OFTEN BETTER TO BE PATIENT THEN SIMPLE JUMP INTO A TRADE.

MORE TRADE EXAMPLES CAN BE VIEWED ON OUR HOMEPAGE.

## **7.1**

### **ADVANCED RULES**

WHEN YOU HAVE ALREADY EXPERIENCE IN TRADING FOREX, USE THIS RULES TO INCREASE YOUR WINNING TRADES AND YOUR PROFITS.

## **7.2**

### **ENTRY ON THE MOVE**

OSZILATOR HEADING DOWN, MOMENTUM IS STRONG, OTHER INDICATORS CONFIRM THE DIRECTION.

IN SUCH CASES YOU CAN ENTER THE TRADE EARLIER.

## **7.3**

### **FILTER OUT TIGHT RANGES**

WHEN THE MARKET IS IN A TIGHT RANGE IGNORE UPCOMMING ENTRY SIGNALS AS LONG THE PRICE DON'T LEAVE THE RANGE.

ENTER THE TRADE IN THE DIRECTION FROM THE SIGNAL AFTER A CLEAR BREAK OF THE RANGE.

#### **7.4**

##### **CHOOSE THE BEST STOP LOSS LEVEL**

LOOK TO SUPPORT/RESISTANCE LEVEL, FIBS, PIVOTS. CHOOSE THE STRONGEST RESISTANCE OR SUPPORT LEVEL FOR THE STOPLOSS.

#### **7.5**

##### **USE TREND CORRECTIONS**

THE BASIC RULES SAYS. TRADE WITH THE TREND. HOWEVER, ADVANCED TRADERS CAN USE COUNTERTRENDS AND CORRECTIONS TO MAKE SOME EXTRA PROFITS.

FOR THIS YOU HAVE TO DETERMINE THE TREND AND LOOK FOR POSSIBLE TURNING POINTS IN THE TREND. (TRENDLINES, FIBS, PIVOTS)

ENTER THE TRADE WHEN A POSSIBLE TURNING POINT IS COMING UP AND YOU HAVE A SIGNAL FROM ProFx.

## THERMS AND CONDITIONS

### RISK

BEFORE YOU MAKE ANY INVESTMENT OR TRADING DECISIONS, YOU SHOULD CAREFULLY INFORM YOURSELF ABOUT THE OPPORTUNITIES AND RISK. APART FROM THE FINANCIAL ASPECT, THIS MIGHT ALSO INCLUDE THE FISCAL AND LEGAL ONES. PLEASE PARTICULARLY NOTE THAT THE PAST PERFORMANCE OF A TRADING SYSTEM OR TRADING STRATEGY IS NOT INDICATIVE FOR FUTURE RESULTS. SEE ALSO CFTC RULE 4.41

CFTC RULE 4.41 - HYPOTHETICAL OR SIMULATED PERFORMANCE RESULTS HAVE CERTAIN LIMITATIONS. UNLIKE AN ACTUAL PERFORMANCE RECORD, SIMULATED RESULTS DO NOT REPRESENT ACTUAL TRADING. ALSO, SINCE THE TRADES HAVE NOT BEEN EXECUTED, THE RESULTS MAY HAVE UNDER-OR-OVER COMPENSATED FOR THE IMPACT, IF ANY, OF CERTAIN MARKET FACTORS, SUCH AS LACK OF LIQUIDITY. SIMULATED TRADING PROGRAMS IN GENERAL ARE ALSO SUBJECT TO THE FACT THAT THEY ARE DESIGNED WITH THE BENEFIT OF HINDSIGHT. NO REPRESENTATION IS BEING MADE THAT ANY ACCOUNT WILL OR IS LIKELY TO ACHIEVE PROFIT OR LOSSES SIMILAR TO THOSE SHOWN.

THE RISK OF LOSS IN TRADING FOREIGN EXCHANGE (FOREX) CAN BE SUBSTANTIAL. YOU SHOULD THEREFORE CAREFULLY CONSIDER WHETHER SUCH TRADING IS SUITABLE FOR YOU IN LIGHT OF YOUR FINANCIAL CONDITION. THE HIGH DEGREE OF LEVERAGE THAT IS OFTEN OBTAINABLE IN FOREX TRADING CAN WORK AGAINST YOU AS WELL AS FOR YOU. THE USE OF LEVERAGE CAN LEAD TO LARGE LOSSES AS WELL AS GAINS.

FOREX TRADING OFFERS LARGE POTENTIAL REWARDS, BUT ALSO LARGE POTENTIAL RISK. YOU MUST BE AWARE OF THE RISK AND BE WILLING TO ACCEPT THEN IN ORDER TO INVEST IN THE FOREX MARKET. DON'T TRADE WITH MONEY YOU CANNOT AFFORD TO LOSE. NO SINGLE SYSTEM IS PERFECT. BY USING OUR TRADING SYSTEMS OR TRADING STRATEGIES YOU AGREE TO HOLD FOREXEASYSTEMS AND ANYONE INVOLVED IN THE DEVELOPMENT, PRODUCTION AND DISTRIBUTION OF PRODUCT PURCHASE THROUGH FOREXEASYSTEMS FREE OF ANY RESPONSIBILITY OR LIABILITY FOR ANY LOSSES SUSTAINED WHILE TRADING WITH LIVE FUNDS. ANY LIVE TRADING THAT YOU DO, BE IT MANUAL OR AUTOMATED, YOU ARE DOING SO AT YOUR OWN RISK AND DISCRETION. FOREX IS A VERY RISKY AND UNPREDICTABLE BUSINESS. YOU CAN LOSE LARGE AMOUNTS OF MONEY BY TAKING THE RISK OF TRADING LIVE MARKET. FOREXEASYSTEMS SHALL NOT BE HELD RESPONSIBLE OF ANY LOSSES THAT YOU MIGHT INCUR DURING ANY TRADES.

THIS IS NEITHER A SOLICITATION NOR AN OFFER TO SELL/BUY CURRENCIES, FUTURES, STOCKS OR OPTIONS ON THE SAME. NO REPRESENTATION IS BEING MADE THAT ANY ACCOUNT WILL OR IS LIKELY TO ACHIEVE PROFITS OR LOSSES SIMILAR TO THOSE DISCUSSED VERBALLY OR WRITTEN ON ANY LITERATURE BY FOREXEASYSTEMS. THE PAST PERFORMANCE OF ANY TRADING SYSTEM / TRADING STRATEGY OR METHODOLOGY IS NOT NECESSARILY INDICATIVE OF FUTURE RESULTS.

NO GUARANTEE IS MADE THAT YOU WILL BE ABLE TO REPLICATE THE SAME RESULTS.

## LICENSE AGREEMENT

THE PRESENT LICENSE AGREEMENT REGULATES THE RELATIONSHIP BETWEEN FOREXEASYSTEM AND THE CLIENT/USER OF THE MANUAL TRADING STRATEGY ProFx.

THE CLIENT ASSUMES THE RESPONSIBILITIES AND REQUIREMENTS OF THIS AGREEMENT WITH USE OF THE MANUAL TRADING STRATEGY ProFx.

*GENERAL* - THE OBJECT OF THIS AGREEMENT IS THE MANUAL TRADING STRATEGY ProFx. THE CLIENT RECOGNIZES THE RISK ASSOCIATED WITH WORKING IN FINANCIAL MARKETS. FOREXEASYSTEMS DOES NOT BEAR DIRECT OR INDIRECT RESPONSIBILITY IN CONNECTION WITH THE RISK OF THE CLIENT.

*RELATIONSHIP* - THE AGREEMENT BETWEEN FOREXEASYSTEMS AND THE CLIENT BEGIN WITH THE ACQUISITION BY THE CLIENT OF THE MANUAL TRADING STRATEGY ProFx.

*CLIENT IS ALLOWED TO:*

- 1) USE THE STRATEGY WITHIN THE LIMITATIONS AND CONDITIONS OF THE LICENCE AGREEMENT.
- 2) ACQUIRE ANY REVISED VERSION OF THE SYSTEM—TAKING INTO ACCOUNT THE TIME FOREXEASYSTEMS TAKES TO DEVELOPE AND UPGRADE THE SYSTEMS.
- 3) SUBMIT SUGGESTIONS FOR THE IMPROVEMENT OF THE SYSTEM.
- 4) RECEIVE UPDATES FOR THE SYSTEM WHEN AVAILABLE. SEE ALS "UPDATES"
- 5) USE THE MANUAL TRADING STRATEGY ProFx ON EVERY BROKER ACCOUNT WHERE THE CLIENT (LICENSE HOLDER) IS THE ACCOUNT HOLDER.

*CLIENT CANNOT:*

- 1) RESELL THE SYSTEM
- 2) SHARE IT WITH OTHER TRADER
- 3) DECOMPILE THE SOURCE FILES

VIOLATIONS - IN CASES OF VIOLATION THE LICENSE WILL BE AUTOMATICALLY DEACTIVATED AND LEGAL STEPS WILL BE TAKEN.

*FOREXEASYSTEMS CAN:*

INCLUDE NEW FUNCTIONALITY; INDICATORS ETC. WITHOUT NOTICE.

TERMINATE THE RELATIONSHIP WITH THE CLIENT DUE THE INCORRECT ACTIONS OF THE CLIENT IN REGARDS TO THE SYSTEM AND EQUIPMENT OF THE COMPANY AND/OR THE CLIENTS NON COMPLIANCE OF THE CONDITIONS OF THE PRESENT AGREEMENT.

FOREXEASYSTEMS CANNOT:

FALSIFY OR MODIFY IN ANY WAY THE CLIENTS RESULTS AND PROFITS FROM USE OF THE SYSTEM.

*UPDATES* - THE CLIENT WILL RECEIVE BUILD UPDATES ALWAYS FOR FREE. VERSION UPDATES WILL BE OFFERED FOR A DISCOUNTED PRICE FOR EXISTING CLIENTS.

*REFUND POLICY* - EACH CUSTOMER HAS 14 DAYS RETURN RIGHT. THIS RETURN

RIGHTS EXPIRES AFTER DOWNLOAD. EXCEPTION: IF IN THE PRODUCT DESCRIPTION THE REFUND IS INCLUDED THEN THAT CONDITIONS OVERRIDE THIS POLICY.

DELIVERY - WE DELIVER OUR PRODUCTS ELECTRONICALLY. THROUGH EMAIL OR BY DOWNLOADING FROM OUR SERVERS.

WE DELIVER BASICALLY AS FAST AS POSSIBLE. IN SOME CASES WE PUT A "HOLD" ON THE DELIVERY TO REVIEW ORDERS MANUAL. EXAMPLE: PAYMENT COMES FROM UNVERIFIED PAYPAL ACCOUNT, ACCOUNT HOLDER NAME AND BILLING NAME ARE MISSMATCHING.

SUCH "HOLDS" COULD CAUSE DELAYS UP TO 5 BUSSINES DAYS.

*CHANGES* - WE RESERVE THE RIGHT TO CHANGE THE POLICY. ONLY THE LATES VERSION OF THIS POLICY IS IN EFFECT. ANY CHANGES WILL BE POSTED ELECTRONICALLY.

*FOREXEASYSTEMS, 27 AUGUST 2009*

## 10.1

### Contact Information

SUPPORT:	<a href="mailto:support@forexeasystems.com">support@forexeasystems.com</a>
LICENSE:	<a href="mailto:license@forexeasystems.com">license@forexeasystems.com</a>
OFFICE:	<a href="mailto:office@forexeasystems.com">office@forexeasystems.com</a>
WEB:	<a href="http://www.forexeasystems.com">http://www.forexeasystems.com</a>
Yahoo IM:	FOREXEASYSTEMS